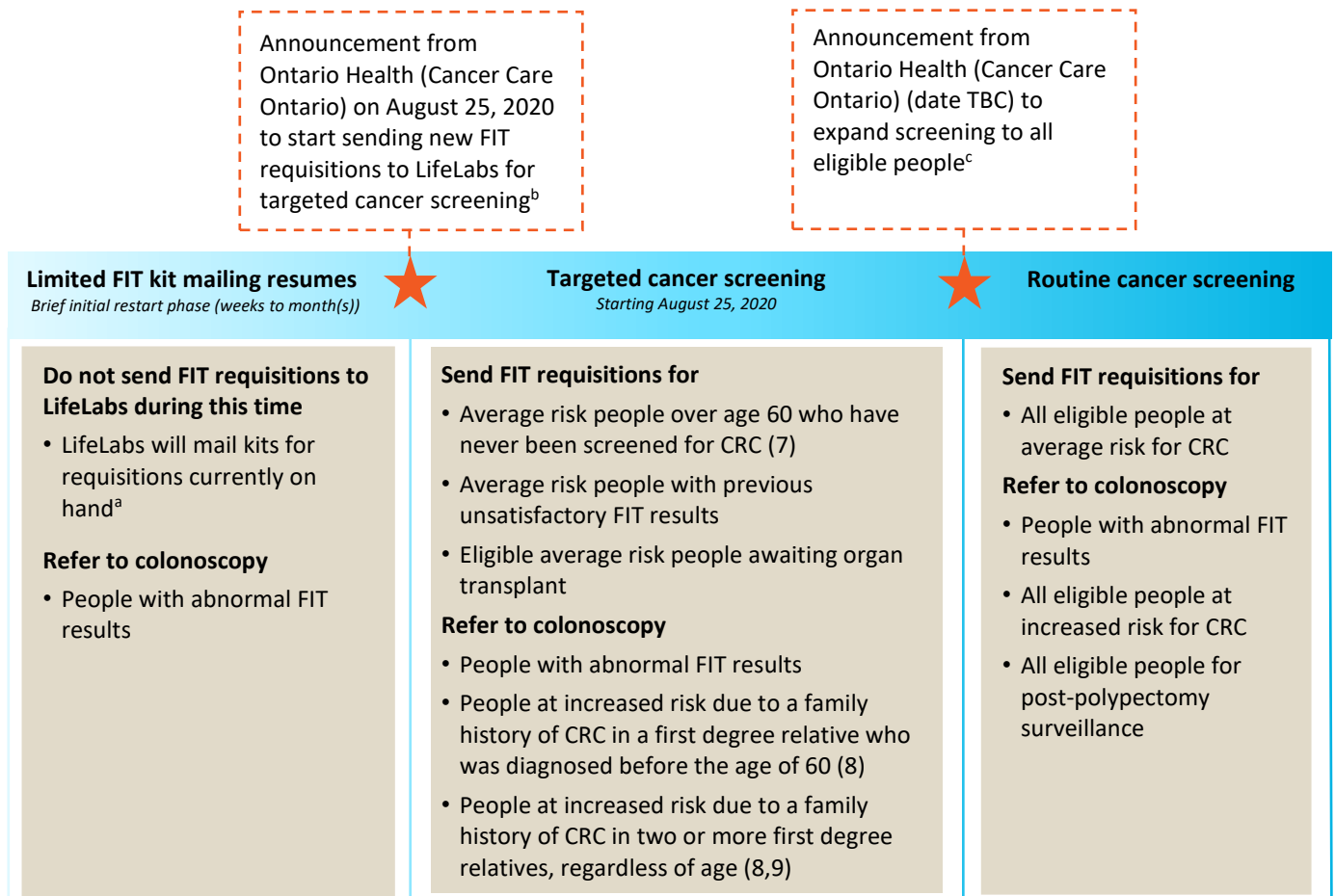


## Summary of COVID-19 Tip Sheet #15: Guidance for primary care providers resuming breast, cervical and colorectal cancer screening

Ontario Health (Cancer Care Ontario) recommends that colorectal, cervical and breast cancer screening services are resumed in a gradual manner (see Figure 1 and 2). As of August 25, 2020, primary care providers can resume sending FIT requisitions to LifeLabs for targeted cancer screening. Ontario Health (Cancer Care Ontario) will communicate when routine colorectal cancer screening can resume. Primary care providers should gradually resume cervical and breast cancer screening, initially considering targeted cancer screening for those at the highest risk of cancer and based on local factors gradually expand to routine screening.

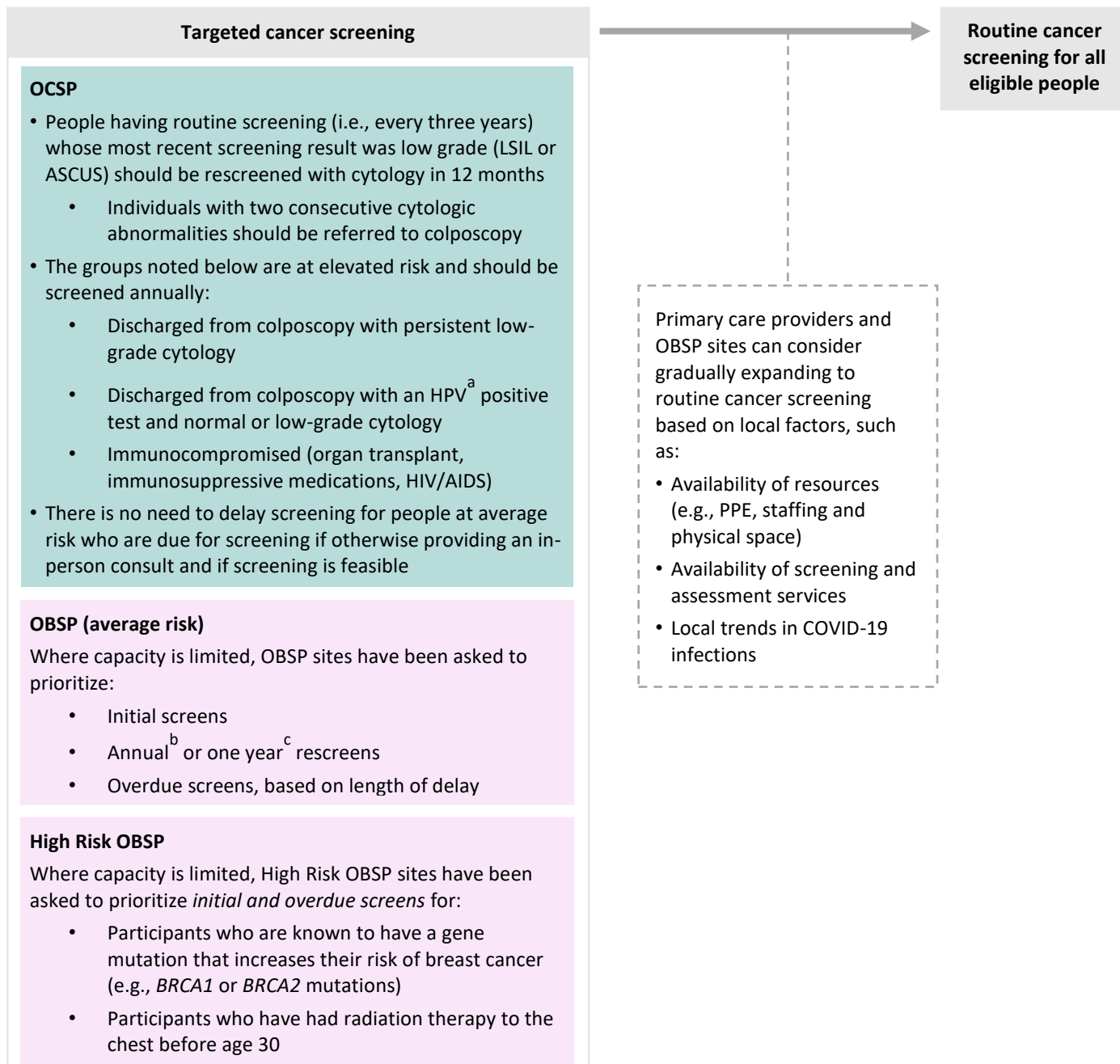
**Figure 1: Gradual resumption of colorectal cancer screening through the ColonCancerCheck (CCC) program**



- In response to the COVID 19 pandemic, LifeLabs temporarily stopped mailing out FIT kits on March 23, 2020. As result, there is a significant number of FIT requisitions that need to be processed. LifeLabs will resume mailing out kits on a daily basis to clear requisitions currently on hand.
- On August 25, 2020, LifeLabs started accepting new FIT requisitions for groups at higher risk of CRC (i.e., targeted cancer screening).
- A decision to expand to all eligible people will be made provincially taking into consideration several factors such as, capacity within the colonoscopy system, trends in COVID 19 and achieving the benefits of routine cancer screening.

**Acronyms:** Colorectal cancer (CRC) and fecal immunochemical test (FIT).

**Figure 2: Gradual resumption of cervical and breast cancer screening through the Ontario Cervical Screening Program (OCSP) and the Ontario Breast Screening Program (OBSP)**



- Currently, HPV testing is not part of the OCSP or an insured test in Ontario. However, HPV testing is available in some places in Ontario though patient-pay or in some hospitals.
- Annual (ongoing) screening recall recommendation due to family history of breast and/or ovarian cancer or a history of high risk pathology.
- One year (temporary) screening recall recommendation due to high breast density  $\geq 75\%$  or as recommended by the reporting radiologist.

**Acronyms:** Acquired immunodeficiency syndrome (AIDS), atypical squamous cells of undetermined significance (ASCUS), low-grade squamous intraepithelial lesion (LSIL), human immunodeficiency viruses (HIV), human papillomavirus (HPV) and personal protective equipment (PPE).